



Rushcliffe
Oaks

Celebrating life and honouring every memory

Memorialisation Options



Honouring Every Memory

Rushcliffe Oaks provides a broad range of memorialisation options, from traditional, formal formats to more innovative installations. Each has been selected to complement the natural beauty of the site and we hope that amongst them you will find something that is perfectly suited for your personal commemoration of your loved one.

There is no requirement for your loved one's funeral service to have been held at Rushcliffe Oaks. All are welcome to make use of our memorialisation options.

To order your chosen memorialisation, please fill in the enquiry form (enclosed, or on our website at www.rushcliffeoaks.co.uk) and one of our team will get in touch with you to guide you through the process.

Alternatively, you can contact us directly by telephoning 0115 914 8557 or emailing info@rushcliffeoaks.co.uk

Contents:

THE MEMORIAL GROUNDS

- *Quercus Woodland*
- *Acorn Gardens*

OPTIONS FOR INTERMENT

- *Columbarium Stone Niches*
- *Stone Orbs*

ENGRAVED MEMORIALS

- *Oak Avenue Kerb Plaques*
- *Bronze Stake Plaques*
- *Memorial Bench Plaques*
- *Memory Tree Golden Leaves*
- *Annular Seat Memorial Slats*
- *Stone Orb Plaques*
- *Slate Plaques*
- *Wooden Plaques*
- *Butterfly and Dove Plaques*

ONLINE MEMORIALISATION

- *The Rushcliffe Oaks Book of Remembrance*



Remembering the Past. Protecting the Future.

The nine acres of Rushcliffe Oaks are home to a wide variety of wildlife and we are committed to maintaining the natural habitat through careful management and sensitive interaction. For this reason, we have chosen to avoid some elements of more traditional cemeteries, in particular prohibiting the use of artificial flowers, and plastic, glass, metal, or ceramic items.

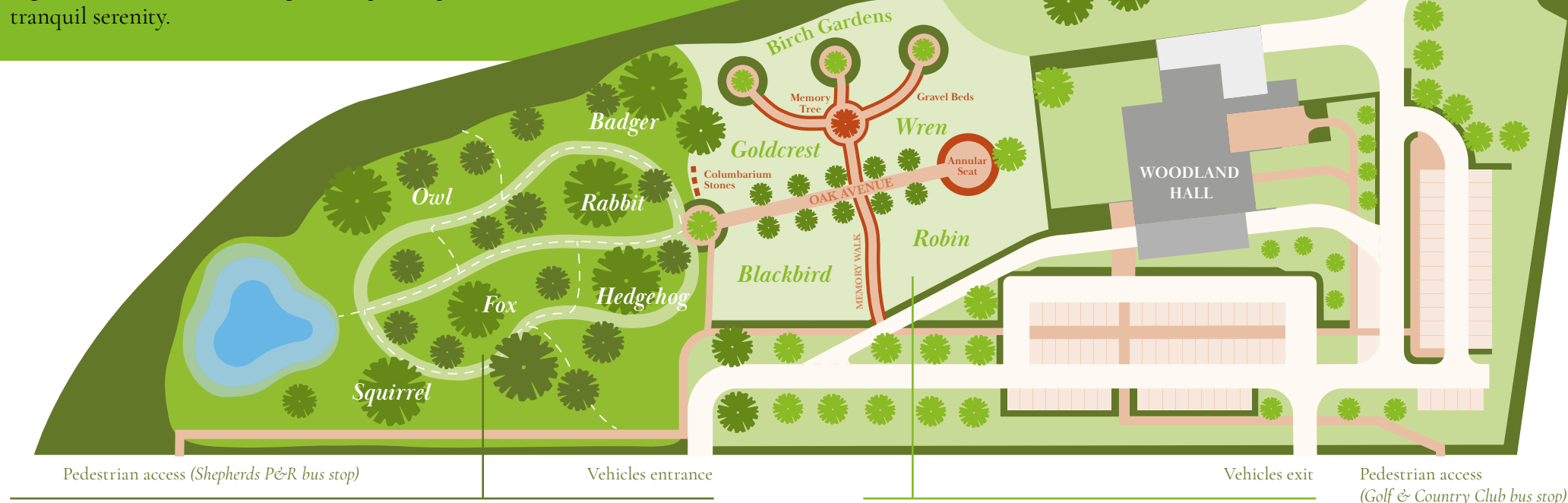
Instead, we encourage visitors to bring natural cut flowers (free from plastic wrappings or bindings) to lay in remembrance when visiting their loved ones' memorials. Our intention is that this will better maintain the natural beauty of the site, keeping it a green and pleasant space for all and allowing the planting and wildflowers to provide a beautiful backdrop to the memorialisations.

If you have any questions about which items are permitted on the site, please do not hesitate to contact us.

The Rushcliffe Oaks Memorial Grounds

The grounds at Rushcliffe Oaks are divided into two distinct areas for remembrance — the Acorn Gardens and the Quercus Woodland.

Throughout both, sensitive memorialisation options allow for personal expressions of remembrance, providing for dignified reflection amidst tranquil serenity.



Quercus Woodland

In the northern part of the site, paths radiate down from the formal Acorn Gardens into the tranquil environs of the Quercus Woodland. This peaceful, pleasant habitat, including wildflower meadows and newly-planted broad-leaved trees, is maintained with an emphasis on supporting nature and encouraging bio-diversity.

The area is divided into six informal sections, each named after native British animals – *Badger*, *Fox*, *Hedgehog*, *Owl*, *Rabbit* and *Squirrel*.

Gravel paths provide access amongst the trees and meadows, with eight memorial benches available for reflection and remembrance.

Acorn Gardens

The restful formal gardens are divided by the Oak Avenue and the Memory Walk, creating four distinct memorial lawns – *Goldcrest*, *Wren*, *Blackbird*, and *Robin*.

Beyond the Avenue the Memory Walk leads to the striking Memory Tree, and then further in three short sections to circular Birch gardens. Round each of these, memorial benches are available for quiet reflection. The Oak Avenue itself is lined by memorial kerbs and to the south leads to the Annular Seat – an impressive 10-metre-wide circular bench comprising over 300 engravable memorial slats. Close to the north end of the Avenue, marking the boundary with the Quercus Woodland, stand three Columbarium Stones for the interment of ashes.



Options for Interment

Your preference may be for your loved one's ashes to be retained within a memorialisation. For such interments, Rushcliffe Oaks provides a number of attractive options.



Columbarium Stone Niches

Three columbarium stones stand at the north end of the Acorn Gardens, close to the edge of the *Quercus* Woodland. These large pieces of Stanton Moor sandstone have been uniquely designed for Rushcliffe Oaks to accommodate ashes interments within a natural 'standing stone'.

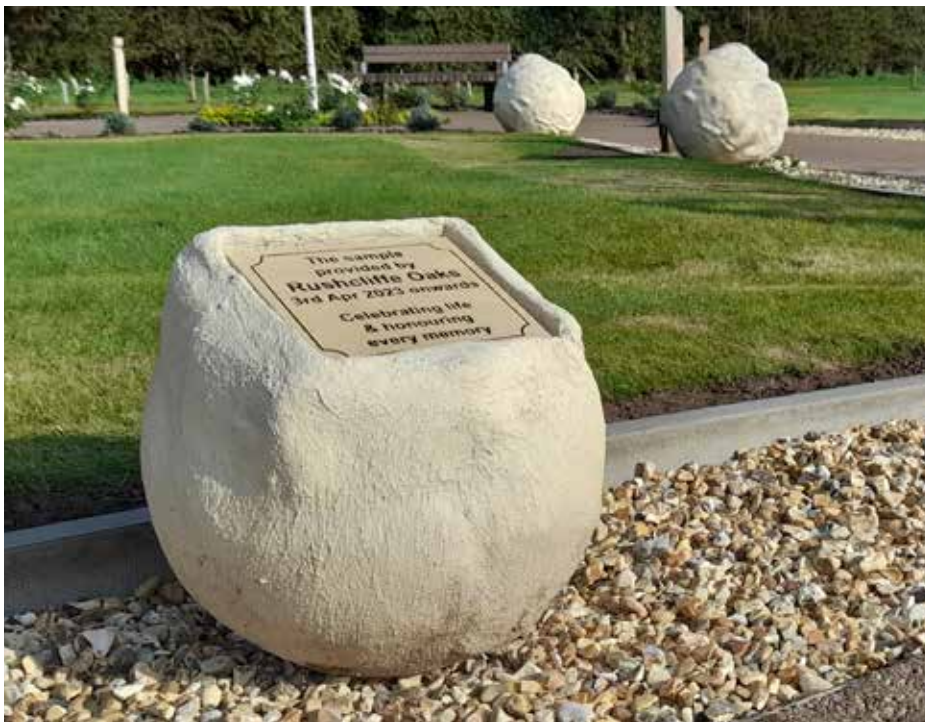
Two of the columbaria can accommodate nine interments each, while the larger third stone can accommodate twelve interments. Each niche is designed to hold a single set of ashes contained in an urn and sealed behind a 25cm round engraved welsh slate plaque.

LOCATION:

- *Acorn Gardens*

LEASES AVAILABLE:

- *5 years*
- *10 years*
- *25 years*



Stone Orbs

Designed to look like natural boulders, these cast stone orbs are available in three sizes, accommodating one, two or up to four sets of ashes in individual urns behind a single engraved plaque. The extra accommodation makes the larger sized orbs perfect for couples or family interments.

The orbs can be individually positioned on the gravel beds in the Acorn Gardens or, in the case of single interment orbs, alongside the paths in the Quercus Woodland, giving a uniquely personal interment placement option.

LOCATION:

- *Acorn Gardens*
- *Quercus Woodland**

LEASES AVAILABLE:

- *5 years*
- *10 years*
- *25 years*

**Single orbs only*



Engraved Memorials

An engraved memorial provides a lasting location for the focus of remembrance for a loved one. Within the Rushcliffe Oaks memorial grounds we offer a number of locations and options for such memorialisations.





Oak Avenue Kerb Plaques

Oak Avenue is the central feature of the Acorn Gardens, presenting a long, tree-lined pathway between the Annular Seat and the Quercus Woodland. Each side of the avenue is lined by memorial kerbs cut from locally-sourced Stanton Moor sandstone and designed to accommodate large 8" x 6" bronze plaques for personal remembrance.

These plaques are available in a variety of colours and with a choice of typefaces and motifs to enhance your options for personalisation.

LOCATION:
• Acorn Gardens

LEASES AVAILABLE:
• 5 years
• 10 years
• 25 years



Stake Plaques

Bronze stake plaques with personal inscriptions are available for placement in flower-beds of the Acorn Gardens, and are ideal for commemorating a loved one whose ashes have been scattered.

These 5" x 7" plaques are available in a variety of colours and with a choice of typefaces and motifs.

LOCATION:
• Acorn Gardens

LEASES AVAILABLE:
• 5 years
• 10 years
• 25 years



Bench Plaques

There are six memorial benches in the Acorn Gardens and a further eight in the Quercus Woodland. Each Iroko hardwood bench can accommodate a number of 9" x 2½" bronze memorial plaques with personalised inscriptions.

Plaques are available in a variety of colours and with a choice of typefaces and motifs.

LOCATIONS:
• Acorn Gardens
• Quercus Woodland

LEASES AVAILABLE:
• 5 years
• 10 years



Memory Tree Golden Leaves

The Memory Tree in the Acorn Gardens is an eye-catching 3.2 metre tall corten steel sculpture with attachment points for hundreds of golden metal leaves. Each leaf is engravable on both sides, providing a beautiful option for a personalised inscription.

LOCATION:

- *Acorn Gardens*

LEASES AVAILABLE:

- *5 years*
- *10 years*



Annular Seat Memorial Slats

The Annular Seat is an impressive 10 metre diameter ring-shaped bench. Each of its 300 wooden slats can be engraved with a personalised inscription, permanent for the safe lifetime of the weather-resistant Iroko hardwood, which could be anything up to 40 years.

LOCATION:

- *Acorn Gardens*

LEASES AVAILABLE:

- *Safe lifetime of the Iroko hardwood*



Plaque Orbs

These cast stone orbs with an embedded plaque are available for placement in both the Acorn Gardens and the Quercus Woodland. They are similar in style to the interment orbs, though smaller and without the capacity for the interment of ashes.

LOCATION:

- *Acorn Gardens*
- *Quercus Woodland*

LEASES AVAILABLE:

- *5 years*
- *10 years*
- *25 years*



Slate Plaques

Plaques formed from individual pieces of slate are available for placement alongside the paths throughout the Quercus Woodland, making them ideal for memorialising a loved one whose ashes have been scattered in this area.

LOCATION:

- *Quercus Woodland*

LEASES AVAILABLE:

- *5 years*
- *10 years*



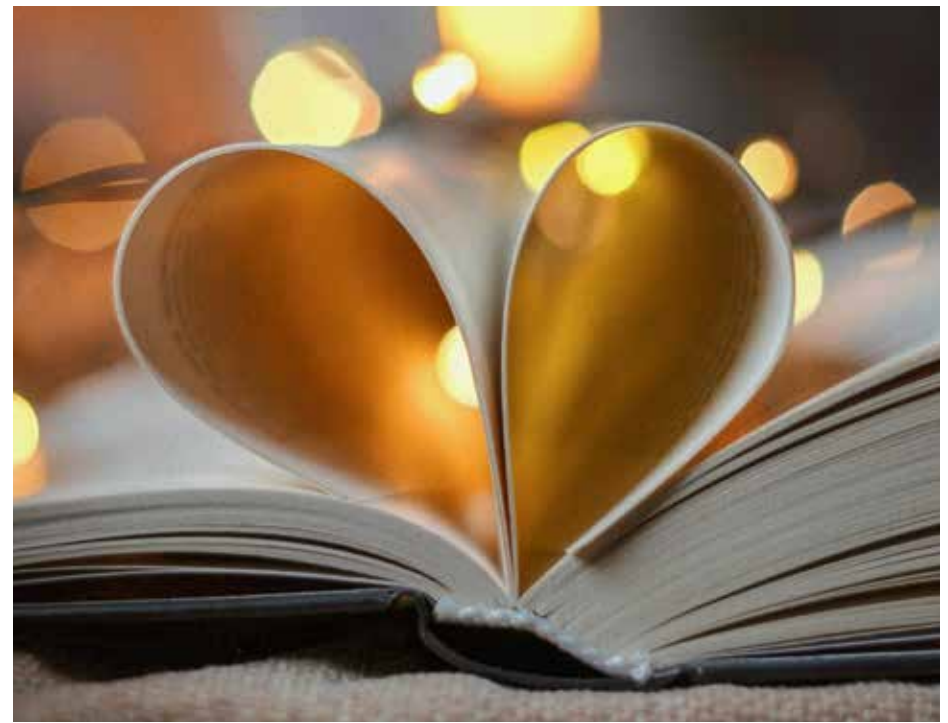
Wooden Plaques

As a more natural alternative to the bronze stake plaques, wooden stake plaques are also available in the Quercus Woodland.



Butterfly and Dove Plaques

These decoratively shaped steel plaques, elevated on a stem above a small stone base, are available for placement in the Quercus Woodland, where they attractively catch the light and complement the wildflower meadows.



Online Memorialisation in the Rushcliffe Oaks Book of Remembrance

To create a free entry for your loved one in our online Book of Remembrance please visit www.rushcliffeoaks.co.uk and fill in the Entry Request form.

LOCATION:

- Quercus Woodland

LEASES AVAILABLE:

- 5 years

LOCATION:

- Quercus Woodland

LEASES AVAILABLE:

- 5 years
- 10 years

LOCATION:

- Online

LEASES AVAILABLE:

- Free



How to Find Us

By road:

Rushcliffe Oaks is located 6 miles to the south-east of Nottingham.

- *From Nottingham;* follow the A52 past the Gamston roundabout. After 2½ miles turn right at the traffic lights onto Stragglethorpe Road, then right onto Main Road.
- *From the A46 at Bingham;* follow the A52 past Radcliffe-on-Trent. After the old railway bridge turn left at the traffic lights onto Stragglethorpe Road, then right onto Main Road.
- *From the south;* follow the A46 past the exit for Cotgrave to the slip-road exit for Cropwell Butler / Cropwell Bishop and turn left at the roundabout onto Stragglethorpe Road. After about 2 miles, pass under the old railway bridge and turn left onto Main Road.

The Rushcliffe Oaks entrance is the first gateway on the left.



Rushcliffe Oaks

Main Road, Stragglethorpe,
Nottingham, NG12 2PY

0115 914 8557

info@rushcliffeoaks.co.uk

www.rushcliffeoaks.co.uk



By public transport:

The *Cotgrave* bus service runs every 20 minutes during the day from the centre of Nottingham. Use the *Golf & Country Club* stop for Rushcliffe Oaks. Travel time from Nottingham bus or railway station is approximately 20 minutes.

By bicycle:

Rushcliffe Oaks is also adjacent to the Radcliffe-on-Trent to Cotgrave Country Park cycle way, and has bicycle hoops available on site.